

The RotaChock is an adjustable, self-leveling and reusable mounting chock that can be used to mount rotating equipment. The RotaChockR is a blend of cutting edge engineering and years of experience to produce strong, stiff and elegant device to end machinery soft-foot.



RotaChock

RotaChock[®] consists of 3 parts :

1. A bottom ring with female thread
2. A middle ring with male thread & a concave cavity on top.
3. A top ring with a convex surface that lies in the middle ring.

RotaChock[®] The Advantages :

1. RotaChock[®] has the highest load rating of all mechanical chocks on the market.
2. Fast & easy installation. The chocking of a 5000kW diesel engine on epoxy cast resin chocks would typically take one or more days to apply the damming material and pour the resin, after which the curing period of 36-48 hours sets in. Then some more hours to remove the damming material and to check that the resin has fully cured, after which the foundation bolts and fitted bolts can be mounted. Altogether a time frame of 3 days at least. By using RotaChock[®], the same job can be usually be finished in 1 day!
3. RotaChock[®] is permanently re-adjustable. In case the need of realignment arises during the life cycle of the machine, simply loosen the foundation bolts, re-align the machine and re-tighten the bolts.
4. RotaChock[®] offers a very cost-effective alternative to other chocking methods due to the very short installation time.

Type Approvals :

RotaChock[®] has been approved by various Classification Societies which enables the use of RotaChock[®] underneath propulsion machinery and auxiliary installations on board ships without having to go through a lengthy plan-approval application.

RotaChock[®] adjustable chocks have been type-approved by :

- Det Norske Veritas (DNV)
- Bureau Veritas (BV)
- American Bureau of Shipping (ABS)



P/N	rated load [kN]	OD Ø [MM]	OD Ø [MM]	minimum height [mm]	design height [mm]	maximum height [mm]	standard bolt size M	optional bolt size M (*)	pitch [mm]	weight [kg]
RC2	100	51	17	30	34	38	10 - 16	18	1,6	0,5
RC3	150	76	20	35	40	45	16 - 20	22	1,6	1,0
RC4	200	102	28	40	46	53	20 - 27	30	2,1	2,5
RC4.5	300	114	31	45	53	60	24 - 30	33	2,1	3,5
RC5	400	127	36	50	59	69	30 - 36	39	2,1	4,5
RC6	600	152	41	55	66	74	36 - 39	42	2,1	7,0
RC7	900	178	46	60	68	76	42 - 45	48	3,2	10
RC8	1200	203	54	70	79	91	48 - 52	56	3,2	15
RC9	1600	229	66	75	84	93	56 - 64	68	3,2	20
RC10	2000	254	74	80	89	98	64 - 72	76	3,2	27

Configuration options :

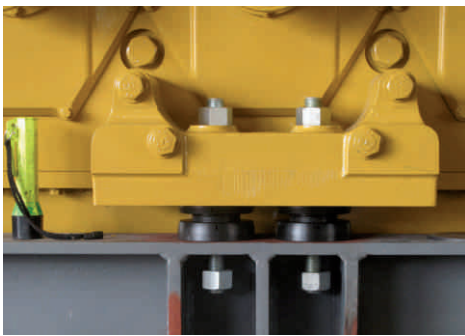
tall line
tall top parts

Materials :

carbon steel
alloy steel
316L stainless

RotaChock ACE, Anti-Corrosion Enhanced

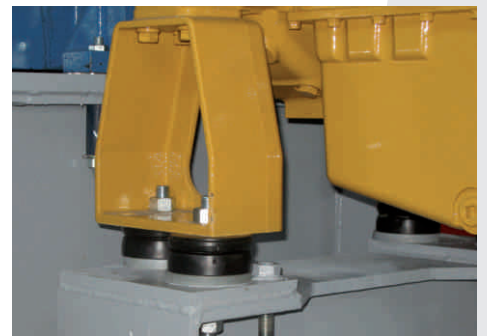
The ACE is a rugged solution for rust problems. We have implemented a new material process to our RotaChock products.



Power Generation



Pump Systems



Gas / Oil Transmission



Vanson Engineering Pvt. Limited

101/102, Tirupati Trade Centre, Navghar, Vasai Road (East), Dist. Thane . PIN 401 210
Tel. : +91(0)250-2390119/2390736 E-mail : info@vansonengineering.com
Fax : +91(0)250-2390737 Website : www.vansonengineering.com



Chock Design B.V.
The Netherlands